

# Shari Lewis moves from play to pizzeria on show

By JOHN KIESEWETTER  
Gannett News Service

The Charlie Horse Music Pizza is a family-run business.

Entertainer Shari Lewis stars in a new PBS children's show beginning on channel 56 at noon, Monday, Jan. 5, set in a California beachfront pizza parlor with her long-time puppet family: Charlie Horse, Lamb Chop and Hush Puppy.

She's producing the daily half-hour series show with her daughter, Malory Tarcher, with whom she shared a daytime Emmy in 1993 for "Lamb Chop's Play-Along," and her husband, publisher Jeremy Tarcher.

And the inspiration for her music-education series is Mrs. Lewis' late mother, Ann Ritz Hurwitz, who gave her the gift of music as a child. Her mother was one of six music coordinators for New York City schools.

"I feel as though I am continuing her life work, stimulating youngsters to make their own music," Mrs. Lewis says.

At the end of the premiere, viewers will see the words "For Mama" on the screen before credits roll.

"My mother always knew that music helped kids learn everything better — math and science, too — because it gives them discipline.

"Recent research shows that the study of music causes additional connections to be made in the brain," she said. "So music is actually brain food you eat through the ears."

The 12-time Emmy winner also knows that kids' favorite food is pizza, which is why the musical series was set in a pizza parlor.

Helping Mrs. Lewis and her puppets pals run the shop are a raccoon named Fingers; a young assistant manager (Wezley Morris); and a skateboarding orangutan named Take Out (musician and gymnast Chance Perry).

Playing fun-loving "Cookie" the cook is veteran actor Dom DeLuise,

who made his TV debut in 1960 with Lewis on The Shari Show. "We have been friends ever since," she says.

Charlie Horse gets top billing because he's "the hands-down favorite of boys," she says. "Lamb Chop had her own show, so this one is for Charlie Horse."

Mrs. Lewis has taped 20 episodes, which will repeat through spring. Another 20 shows will roll out in September, she says. She had produced 85 episodes of Lamb Chop's Play-Along (1992-'96).

This is a much more complex show than Lamb Chop, which was a variety show. This show is a musical comedy

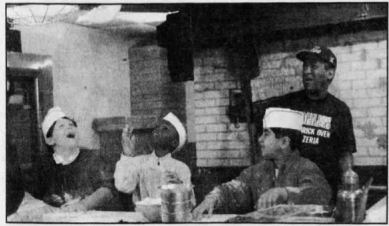
every day," she says.

Each program includes several original songs. In the debut, she sings about the difference between quarter notes, half notes and whole notes.

"The real message of this show is that the best part of music is making it," she says.

"Kids have become consumers of music. They think it's something that you buy or listen to. I want the playing of music to be as important as the playing of sports."

Mrs. Lewis, who turns 64 on Jan. 17, began playing piano before her third birthday.



**DARNEDEST THINGS:** Bill Cosby makes pizza with his friends Gregory Horen (mouth open), Damell Grant (throwing pizza) and Zane Ali, in "Kids Say the Darndest Things," premiering at 8:00, Friday, Jan. 9 on Channel 62.

# Kids say more of those darnedest things

By BOB THOMAS  
The Associated Press

**LOS ANGELES** — The two men sit on a stage with a TV monitor between them — appropriately so, since their combined careers span most of the history of television.

Art Linkletter brought his radio hit "People Are Funny" to TV in 1955 and enjoyed a 10-year run. In addition, his daytime "House Party" show appeared on CBS for 26 years. The show is best remembered for the feature "Kids Say the Darndest Things," in which small fry did just that.

Bill Cosby in 1965 became the first black actor to star in a network dramatic series with "I Spy." Then "The Cosby Show" was the biggest hit of the mid-1980s, and now "Bill Cosby" appears on CBS.

The two men joined at the KTLA studios in Hollywood for a taping of the 1998 version of "Kids Say the Darndest Things." Following Friday's (Jan. 9) premiere, the show will appear weekly on CBS.

After exchanging banter, Mr. Cosby and Mr. Linkletter introduced clips from the old "House Party" show. Adroitly interviewed by Mr. Linkletter, the kids made comments that convulsed the studio audience.

Following a break, Mr. Cosby returned to interview two boys and a girl, ages approximately 8. They proved as funny as their counterparts on the vintage tape.

After completing a "Bill Cosby" episode in New York, Cosby had flown the red-eye for a weekend of taping "Kids Say the Darndest Things."

The show's staff interviews kids for areas of conversation, and key words

are written on cue cards. But Mr. Cosby insists on not talking to the kids beforehand, so their interchange becomes virtually impromptu.

"What I want from them is that honesty," he explained in his dressing room during a break. "And we have to be honest with them. We can't lead them or set traps for them so that they look terrible."

The comedian admitted that juggling two shows on opposite sides of the continent can be wearing "now that I'm 60, not 33."

"With the other show, we have writers. We have to rewrite. We have to write and make funny. With this one, you just talk to the kids. You prod them in one direction, you move them in another direction, you play with them. Sometimes you already have the answers, sometimes you don't," Mr. Cosby added.

Mr. Linkletter at 80 seems just as energetic as when he was television's most proficient interviewer. At one time he appeared on all three networks every week: "House Party," five days weekly, the nighttime "People Are Funny" and "Life with Linkletter."

For some time, he said, he had been looking for someone who could carry on "Kids Say the Darndest Things."

"I didn't want to work that hard," he explained. "And we needed someone who was 'now' in order to get the ratings. I'm a realist. When I sold the show to CBS, I said we needed a star."

"We can't get him; he's too busy." But he's a family man, he's likable, he has a different pace and tempo than I had. People think of him kindly."

SUN SHT - 11/194	2 a.m.	2:30	3 a.m.	3:30	4 a.m.	4:30	5 a.m.	5:30
WADL (1)	Collectible	2:00	2:30	3:00	3:30	4:00	4:30	5:00
WJBC (2)	2:00	2:30	3:00	3:30	4:00	4:30	5:00	5:30
WSMH	Viper (C)	2:00	2:30	3:00	3:30	4:00	4:30	5:00
WDIV (4)	2:00	2:30	3:00	3:30	4:00	4:30	5:00	5:30
WEYI	Kwik Witz	2:00	2:30	3:00	3:30	4:00	4:30	5:00
WKBO (5)	2:00	2:30	3:00	3:30	4:00	4:30	5:00	5:30
WXTZ (7)	2:00	2:30	3:00	3:30	4:00	4:30	5:00	5:30
WJRT	(2:05) Movie: "Best Seller"	2:00	2:30	3:00	3:30	4:00	4:30	5:00
WWJ (8)	2:00	2:30	3:00	3:30	4:00	4:30	5:00	5:30
WNEM	Nightman	2:00	2:30	3:00	3:30	4:00	4:30	5:00
CBET (9)	2:00	2:30	3:00	3:30	4:00	4:30	5:00	5:30
WGN (10)	2:00	2:30	3:00	3:30	4:00	4:30	5:00	5:30
WTVS (11)	2:00	2:30	3:00	3:30	4:00	4:30	5:00	5:30
WFUM	(Off Air)	2:00	2:30	3:00	3:30	4:00	4:30	5:00
WDWB (12)	2:00	2:30	3:00	3:30	4:00	4:30	5:00	5:30
WTBS (13)	2:00	2:30	3:00	3:30	4:00	4:30	5:00	5:30
CFPL	(Off Air)	2:00	2:30	3:00	3:30	4:00	4:30	5:00
CKGN (14)	2:00	2:30	3:00	3:30	4:00	4:30	5:00	5:30
CKCO	2:00	2:30	3:00	3:30	4:00	4:30	5:00	5:30
HBO (15)	2:00	2:30	3:00	3:30	4:00	4:30	5:00	5:30
MAX (16)	2:00	2:30	3:00	3:30	4:00	4:30	5:00	5:30
SHOW (17)	2:00	2:30	3:00	3:30	4:00	4:30	5:00	5:30
FOX (18)	2:00	2:30	3:00	3:30	4:00	4:30	5:00	5:30
TMC (19)	2:00	2:30	3:00	3:30	4:00	4:30	5:00	5:30
DIS (20)	2:00	2:30	3:00	3:30	4:00	4:30	5:00	5:30
AMC (21)	2:00	2:30	3:00	3:30	4:00	4:30	5:00	5:30
FAM (22)	2:00	2:30	3:00	3:30	4:00	4:30	5:00	5:30
COM (23)	2:00	2:30	3:00	3:30	4:00	4:30	5:00	5:30
HST (24)	2:00	2:30	3:00	3:30	4:00	4:30	5:00	5:30
CNBC (25)	2:00	2:30	3:00	3:30	4:00	4:30	5:00	5:30
CNN (26)	2:00	2:30	3:00	3:30	4:00	4:30	5:00	5:30
ESPN (27)	2:00	2:30	3:00	3:30	4:00	4:30	5:00	5:30
ESPN2 (28)	2:00	2:30	3:00	3:30	4:00	4:30	5:00	5:30
TNT (29)	2:00	2:30	3:00	3:30	4:00	4:30	5:00	5:30
LIFE (30)	2:00	2:30	3:00	3:30	4:00	4:30	5:00	5:30
USA (31)	2:00	2:30	3:00	3:30	4:00	4:30	5:00	5:30
TOON (32)	2:00	2:30	3:00	3:30	4:00	4:30	5:00	5:30
HBO (33)	2:00	2:30	3:00	3:30	4:00	4:30	5:00	5:30
A&E (34)	2:00	2:30	3:00	3:30	4:00	4:30	5:00	5:30
TLC (35)	2:00	2:30	3:00	3:30	4:00	4:30	5:00	5:30
DISC (36)	2:00	2:30	3:00	3:30	4:00	4:30	5:00	5:30
NICK (37)	2:00	2:30	3:00	3:30	4:00	4:30	5:00	5:30
NASH (38)	2:00	2:30	3:00	3:30	4:00	4:30	5:00	5:30
MTV (39)	2:00	2:30	3:00	3:30	4:00	4:30	5:00	5:30
BET (40)	2:00	2:30	3:00	3:30	4:00	4:30	5:00	5:30
UNI (41)	2:00	2:30	3:00	3:30	4:00	4:30	5:00	5:30
SCH (42)	2:00	2:30	3:00	3:30	4:00	4:30	5:00	5:30